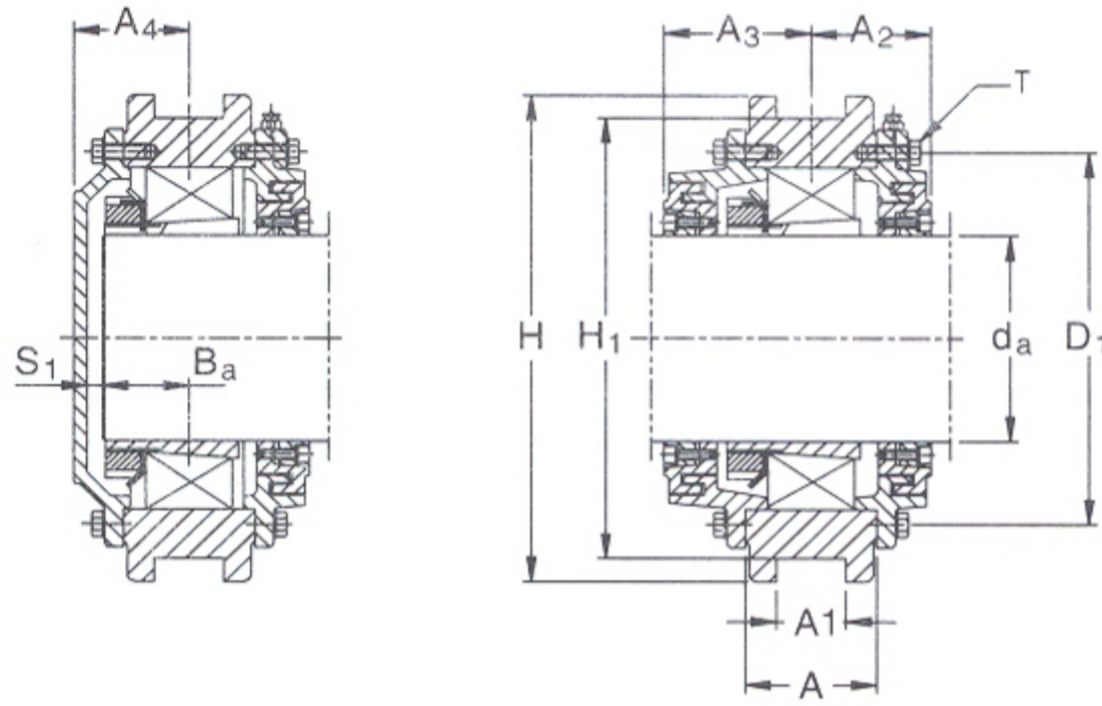




TABLE - 30

**THD take-up housings
for spherical roller bearings with ADAPTER SLEEVE
on plain cylindrical shafts
Shaft dia 50 to 530 mm**

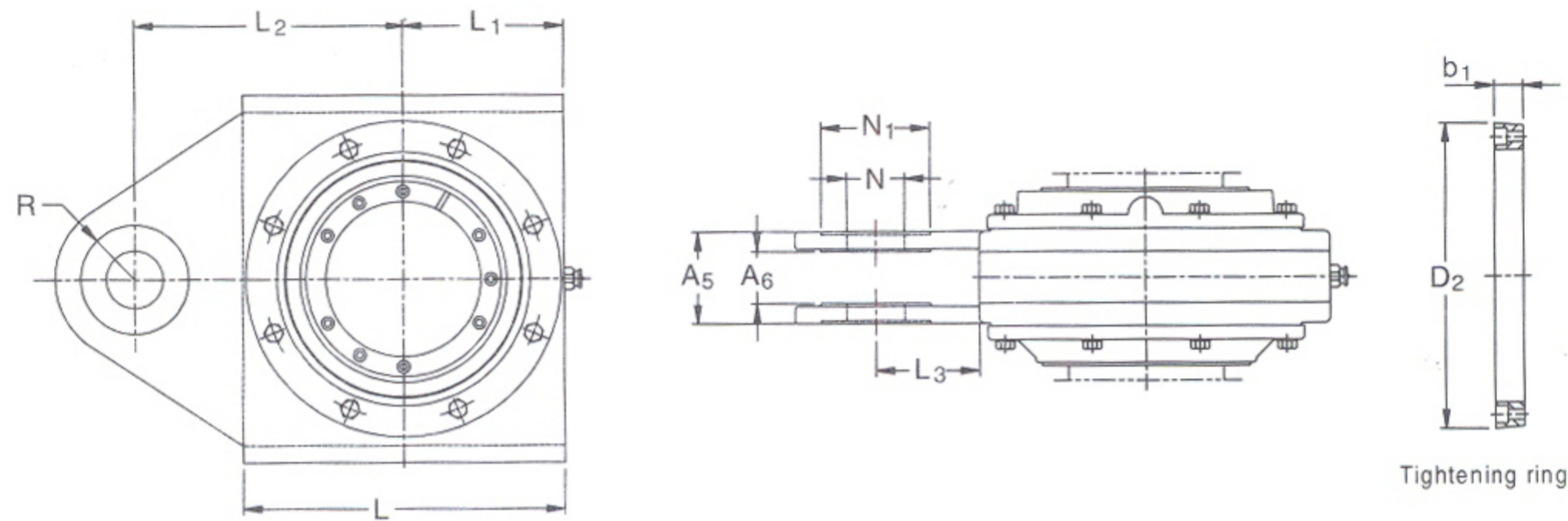
Material	Cast steel grade 280/520, IS 1030-1989
Seal	Labyrinth
Lubrication	Grease
Type	Non-Split type with end covers
Application	Conveyor, tightening pulley
Options Available	a) Closed end or open end. b) Material : Cast Iron : THDC S.G. Iron : THDD c) BL, BF, AL or AF



Type AL
Housing for non-locating bearing
at shaft end

Type BF
Housing for locating bearing
and through shaft

Shaft dia- meter d_a	Housing Dimensions																				Designation Housing of cast steel
	A	A ₁	A ₂	A ₃	A ₄	A ₅	A ₆	B _a	D ₁	H	H ₁	L	L ₁	L ₂	L ₃	N	N ₁	R	S ₁	T	
mm	mm																				
50	60	34	49	-	38	42	22	27	115	150	135	150	75	105	30	20	40	30	5	M 8	THDS 2211
55	66	43	50	-	41	50	26	30	125	165	150	165	82,5	120	37,5	25	50	35	5	M 8	THDS 2212
60	78	53	50	-	53	66	30	35	135	180	155	160	80	145	65	30	60	40	11	M 8	THDS 2213
70	78	53	62	70	49	66	30	36	155	200	175	180	90	155	65	30	60	40	6	M 8	THDS 2216
80	78	53	67	-	63	66	30	40	180	230	200	210	105	170	65	30	60	40	16	M 8	THDS 2218
90	96	40	76	92	70	70	36	45	195	250	220	235	117,5	185	67,5	35	70	40	18	M 8	THDS 2220
100	78	53	85	97	75	76	40	50	215	270	240	255	125	200	70	40	75	45	18	M 8	THDS 2222
	90	53	91	103	76	100	44	60	230	300	270	270	135	195	60	50	95	60	9	M 12	THDS 3222
110	78	53	84	99	72	76	40	55	230	290	260	275	135	210	70	40	75	45	10	M 8	THDS 2224
	95	53	93	108	78	100	44	64	245	310	280	290	145	205	60	50	95	60	7	M 12	THDS 3224
115	100	63	103	108	79	112	52	66	260	335	305	300	155	220	75	60	110	70	5	M 12	THDS 3226
125	83	53	80	102	90	74	40	62	275	330	300	315	155	230	70	40	70	45	20	M 12	THDS 2228
	110	63	108	118	88	112	52	72	290	360	330	330	170	235	75	60	90	70	8	M 16	THDS 3228
135	85	45	77,5	98,5	74,5	150	60	56	245	320	290	280	140	235	90	50	95	70	10	M 10	THDS 3030
	120	73	113	123	93	126	62	78	305	385	355	360	180	260	80	70	120	80	7	M 16	THDS 3230
140	116	74	101	126	101	132	62	75	310	370	340	370	185	350	160	61	110	90	18	M 12	THDS 3032
	130	83	118	133	98	126	62	84	330	400	370	380	190	270	80	70	120	80	6	M 16	THDS 3232
150	102	63	88	113	93	112	52	66	280	360	330	325	165	225	90	45	100	70	20	M 10	THDS 3034
	120	63	113	136	100	122	62	78	330	380	350	375	190	395	160	60	160	80	17	M 12	THDS 3134
160	140	93	133	148	108	140	72	90	360	450	410	420	210	300	90	80	140	90	10	M 16	THDS 3236
170	112	73	101	126	96	165	90	72	315	390	360	380	195	350	130	45	120	70	16	M 12	THDS 3038
180	125	83	107	133	108	125	62	78	340	430	400	390	200	275	85	70	120	80	22	M 12	THDS 3040
	138	90	115	148,5	120	128	62	95	380	440	420	440	220	300	80	60	110	80	15	M 16	THDS 3140
	165	103	138	158	118	140	72	100	405	500	460	470	235	325	90	80	140	90	10	M 16	THDS 3240



Shaft diameter d_a	Appropriate bearing	adapter sleeve	Approx Weight		Tightening ring Designation	Dimensions		Grease quantity ¹⁾	
			Housing type A	B		D_2	b_1	Initial fill (recommended) Housing type A	B
mm	-		kg		-	mm		kg	
50	22211 EK	H 311	10,4	-	PSBD 50	68	15	0,07	-
55	22212 EK	H 312	13,3	-	PSBD 55	73	15	0,08	-
60	22213 CCK	H 313	16,4	-	PSBD 60	82	15	0,10	-
70	22216 EK	H 316	22,2	23,3	PSBD 70	98	18	0,20	0,18
80	22218 EK	H 318	29,0	-	PSBD 80	108	18	0,25	-
90	22220 EK	H 320	35,2	37,3	PSBD 90	118	18	0,25	0,35
100	22222 EK	H 322	40,4	45,5	PSBD 100	128	18	0,55	0,50
	23222 CCK/W33	H 2322	71,0	75,0	PSBD 100	128	18	0,55	0,50
110	22224 EK	H 3124	45,5	48,6	PSBD 110	138	18	0,60	0,55
	23224 CCK/W33	H 2324	75,6	80,6	PSBD 110	138	18	0,75	0,70
115	23226 CCK/W33	H 2326	81,0	86,0	PSBD 115	143	18	0,85	0,80
125	22228 CCK/W33	H 3128	56,5	61,6	PSBD 125	153	18	0,85	0,75
	23228 CCK/W33	H 2328	96,0	102	PSBD 125	153	18	1,05	1,00
135	23030 CCK/W33	H 3030	45,5	52,7	PSBD 135	170	20	0,60	0,55
	23230 CCK/W33	H 2330	119	126,6	PSBD 135	170	20	1,30	1,25
140	23132 CCK/W33	H 3132	137	147	PSBD 140	175	20	1,20	1,10
	23232 CCK/W33	H 2332	141	151	PSBD 140	175	20	1,55	1,50
150	23034 CCK/W33	H 3034	77,0	83,5	PSBD 150	185	20	0,90	0,75
	23134 CCK/W33	H 3134	151	184,6	PSBD 150	185	20	1,35	1,25
160	23236 CCK/W33	H 2336	166	179	PSBD 160	195	20	2,10	2,00
170	23038 CCK/W33	H 3038	136	142	PSBD 170	205	20	1,15	1,00
180	23040 CCK/W33	H 3040	161	168	PSBD 180	215	20	1,45	1,20
	23140 CCK/W33	H 3140	176	191	PSBD 180	215	20	2,30	2,00
	23240 CCK/W33	H 2340	272	291	PSBD 180	215	20	2,60	2,50

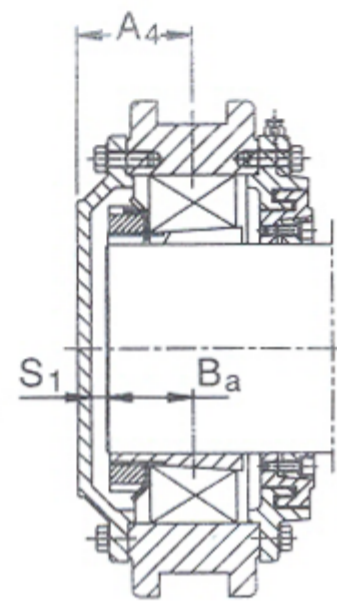
1) Based on 100 % filling



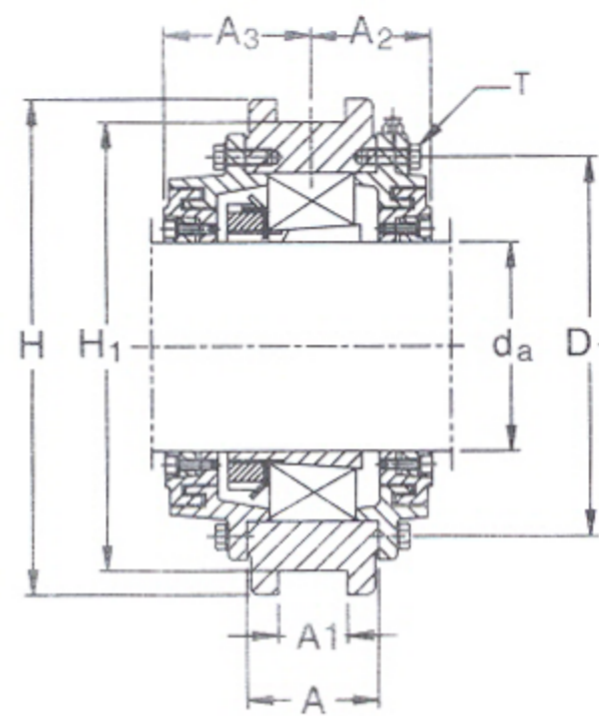
TABLE - 30

**THD take-up housings
for spherical roller bearings with ADAPTER SLEEVE
on plain cylindrical shafts
Shaft dia 50 to 530 mm**

Material	Cast steel grade 280/520, IS 1030-1989
Seal	Labyrinth
Lubrication	Grease
Type	Non-Split type with end covers
Application	Conveyor, tightening pulley
Options Available	a) Closed end or open end. b) Material : Cast Iron : THDC S.G. Iron : THDD c) BL, BF, AL or AF

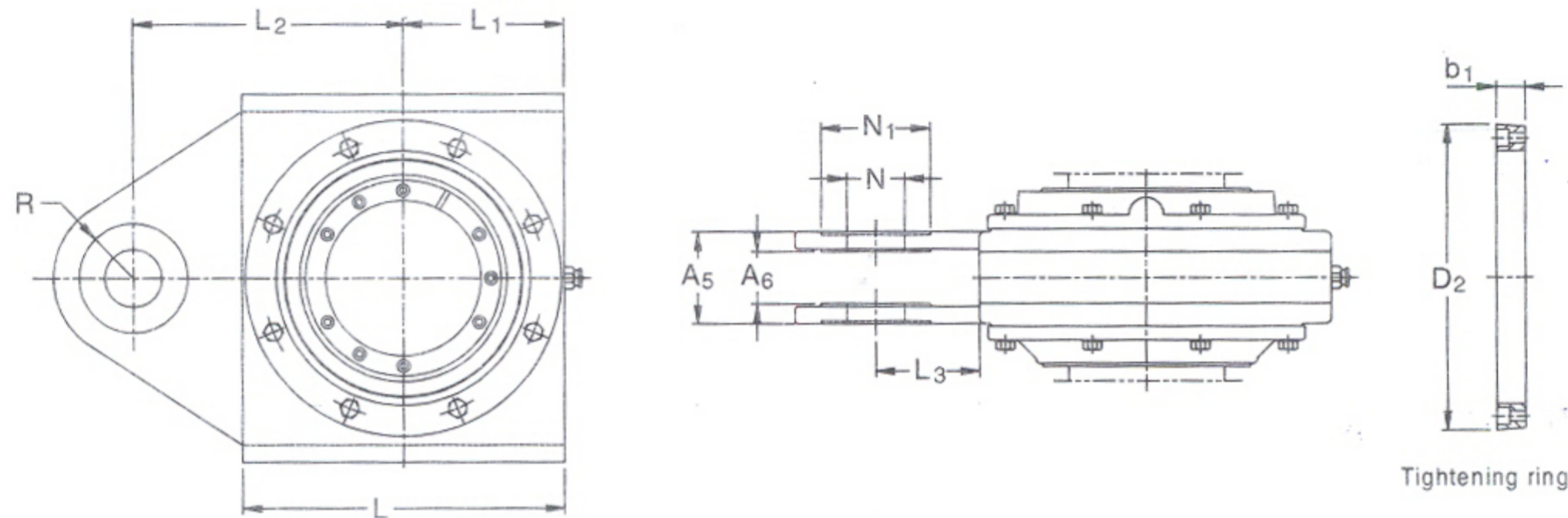


Type AL
Housing for non-locating bearing
at shaft end



Type BF
Housing for locating bearing
and through shaft

Shaft dia- meter d_a	Housing Dimensions																			Designation Housing of cast steel	
	A	A ₁	A ₂	A ₃	A ₄	A ₅	A ₆	B _a	D ₁	H	H ₁	L	L ₁	L ₂	L ₃	N	N ₁	R	S ₁		T
mm	mm																				
200	120	65	107	142	107	200	70	80	370	480	440	430	210	325	100	60	100	80	17	M 16	THDS 3044
	150	103	135	160	135	144	74	100	420	510	480	470	235	530	260	100	175	120	25	M 16	THDS 3144
	175	103	148	183	133	240	173	112	445	540	500	520	260	575	245	100	175	150	11	M 20	THDS 3244
220	152	65	148	178	138	215	123	106	455	540	500	520	260	515	250	100	250	150	22	M 20	THDS 3148
	190	103	148	188	148	240	173	122	490	580	540	560	280	600	250	100	175	150	16	M 20	THDS 3248
240	175	80	152	187	152	225	135	118	490	570	540	550	275	565	270	100	250	150	24	M 20	THDS 3152
	205	103	167	208	158	240	173	132	540	610	570	590	305	615	220	100	200	150	16	M 20	THDS 3252
260	210	123	178	218	163	240	173	135	555	650	610	630	315	630	220	100	175	150	16	M 24	THDS 3256
280	195	103	165	210	170	240	173	125	550	650	610	625	312	630	250	100	240	150	35	M 24	THDS 3160
	230	123	182	222	187	240	173	142	600	670	630	670	335	650	220	100	750	150	33	M 24	THDS 3260
300	210	123	177	212	187	240	170	135	590	670	630	665	340	650	230	100	175	150	40	M 24	THDS 3164
	250	123	192	237	187	300	213	152	640	710	670	710	355	725	275	110	185	200	21	M 24	THDS 3264
320	220	150	197	242	237	300	180	155	630	740	700	740	370	720	310	120	240	200	70	M 24	THDS 3168
	265	123	202	272	237	300	213	175	680	750	700	750	375	750	285	110	185	200	47	M 24	THDS 3268
340	275	123	227	282	247	300	213	180	710	790	740	790	395	765	275	110	185	200	51	M 24	THDS 3272
360	230	120	202	257	254	300	200	185	680	790	740	750	375	750	320	110	230	200	73	M 30	THDS 3176
	295	123	232	297	257	300	213	186	745	820	780	810	420	780	310	110	230	200	55	M 30	THDS 3276
380	300	123	242	307	257	300	213	196	790	870	820	870	435	800	270	110	185	200	45	M 30	THDS 3280
400	315	123	252	317	267	300	213	212	835	925	860	925	463	825	262	110	185	200	39	M 30	THDS 3284
530	420	143	250	370	-	208	128	-	1000	1140	1080	1140	570	770	200	125	200	160	-	M 30	THDS 41/560



Shaft diameter d_a	Appropriate bearing	adapter sleeve	Approx Weight		Tightening ring Designation	Dimensions		Grease quantity ¹⁾ Initial fill (recommended)	
			Housing type A	Housing type B		D_2	b_1	Housing type A	Housing type B
mm	-		kg		-	mm		kg	
200	23044 CCK/W33	OH 3044 H	201	222	PSBD 200	246	25	1,75	1,50
	23144 CCK/W33	OH 3144 H	242	256	PSBD 200	246	25	2,90	2,50
	23244 CCK/W33	OH 2344 H	382	402	PSBD 200	246	25	3,40	3,25
220	23148 CCK/W33	OH 3148 H	312	362	PSBD 220	266	25	3,40	3,00
	23248 CCK/W33	OH 2348 H	462	486	PSBD 220	266	25	4,25	4,00
240	23152 CCK/W33	OH 3152 H	402	462	PSBD 240	286	25	4,40	3,75
	23252 CACK/W33	OH 2352 H	546	581	PSBD 240	286	25	5,05	4,75
260	23256 CCK/W33	OH 2356 H	592	632	PSBD 260	306	25	5,50	5,00
280	23160 CCK/W33	OH 3160 H	542	581	PSBD 280	326	25	6,00	5,15
	23260 CACK/W33	OH 3260 H	677	731	PSBD 280	326	25	7,00	6,25
300	23164 CCK/W33	OH 3164 H	652	692	PSBD 300	350	30	7,50	6,40
	23264 CACK/W33	OH 3264 H	802	862	PSBD 300	350	30	8,15	7,25
320	23168 CCK/W33	OH 3168 H	762	882	PSBD 320	370	30	10,0	8,20
	23268 CAK/W33	OH 3268 H	923	1003	PSBD 320	370	30	9,85	8,75
340	23172 CAK/W33	OH 3272 H	1055	1125	PSBD 340	390	30	12,0	10,5
360	23176 CAK/W33	OH 3176 H	894	1005	PSBD 360	410	30	13,8	10,8
	23276 CAK/W33	OH 3276 H	1208	1290	TPSBD 360	410	30	14,5	12,5
380	23280 CAK/W33	OH 3280 H	1485	1590	PSBD 380	430	30	18,0	16,0
400	23284 CAK/W33	OH 3284 H	1890	1990	PSBD 400	450	30	23,0	20,5
530	241/560 ECK30/W33	OH 241/560	-	2412	PSBD 530	610	40	-	15,0

¹⁾ Based on 100 % filling