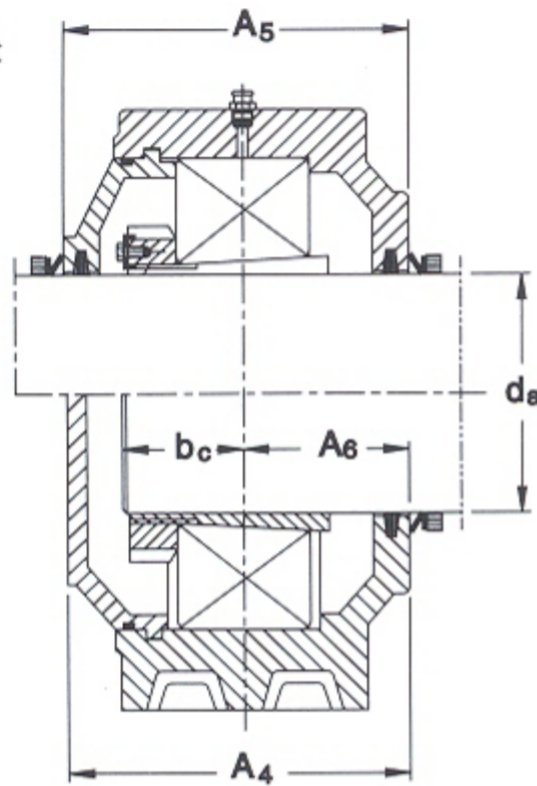




TABLE - 22

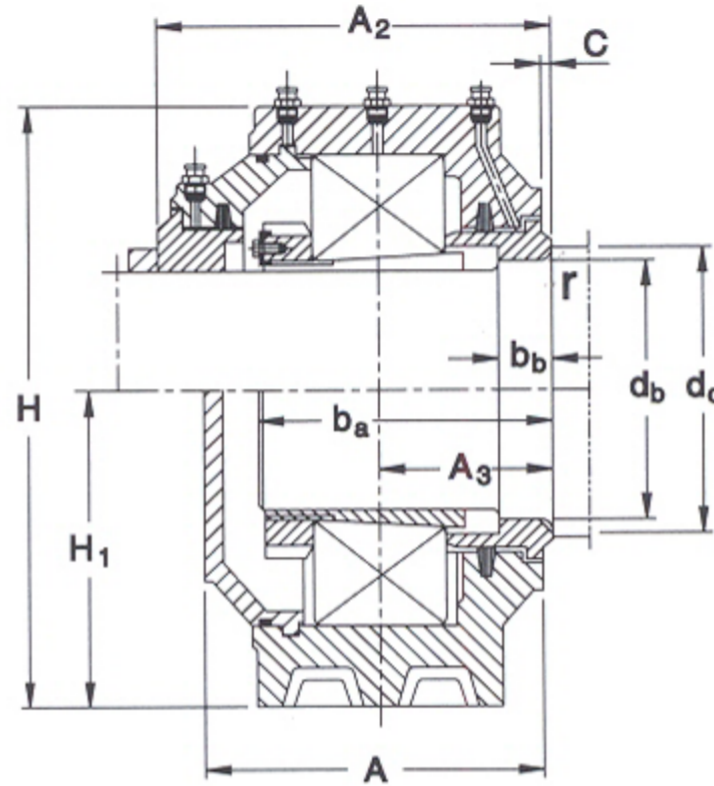
**SDG plummer block housings for spherical roller bearings with ADAPTER SLEEVES**  
Shaft dia 125 to 530 mm

Top half shows fixed bearing for through shaft



Housing with felt seal  
Plain cylindrical shaft

Bottom half shows free bearing for shaft end with end cover

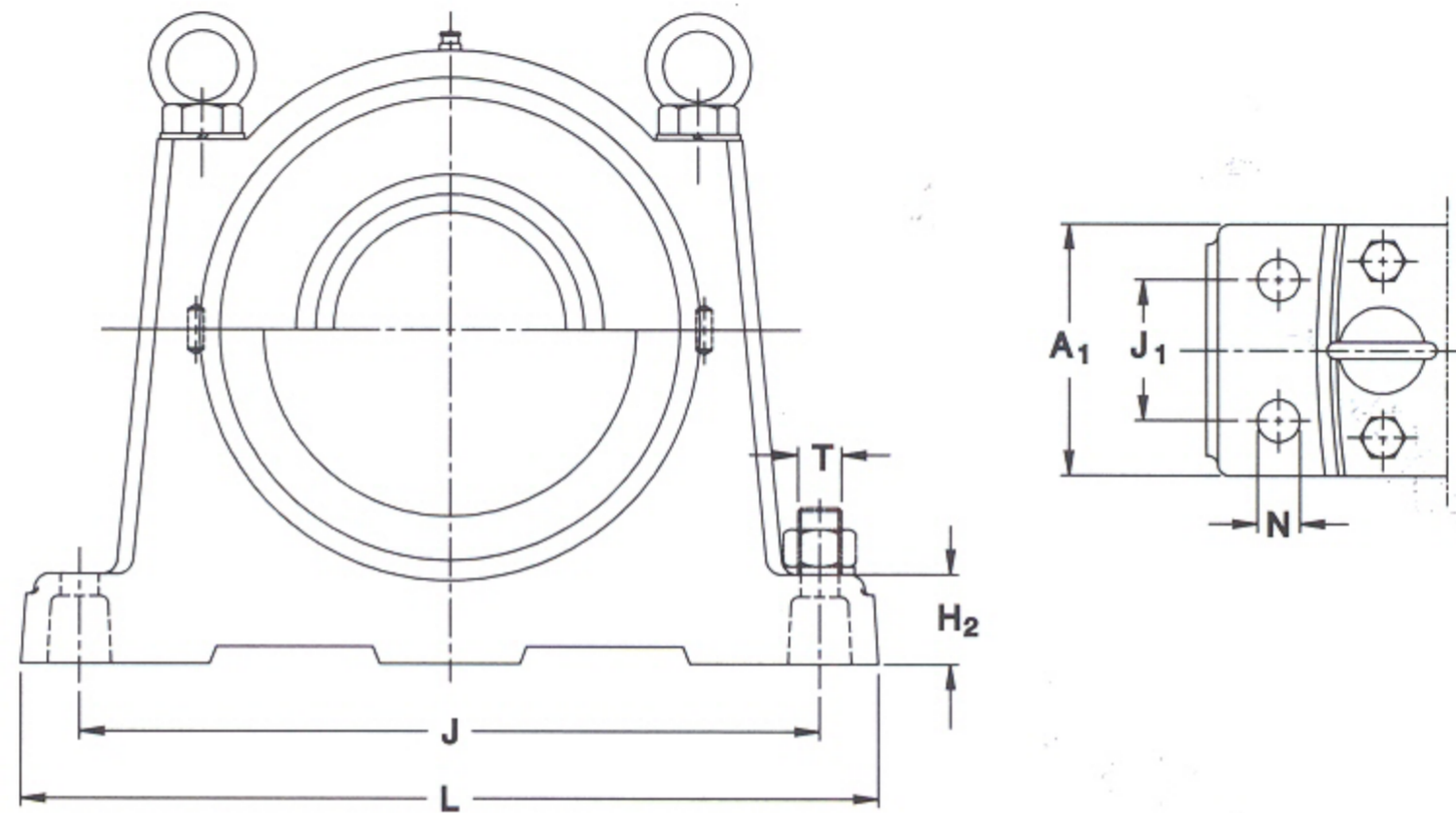


Housing with labyrinth seal felt  
Stepped cylindrical shaft

Material	C.I. FG 260 - IS 210, 1993
Seal	Labyrinth or Felt
Lubrication	Grease
Type	Horizontal Split type with end covers
Application	Suitable for heavy duty services continuous operation.
Options Available	a) End cover for closed end. b) Material : Cast Iron : SDGS S.G. Iron : SDGD c) BL, BF, AL or AF d) For bearing with withdrawal sleeve : SDGC --- D For bearing on stepped cyl shaft : SDGC --- G For bearing with adpter sl for stepped shaft : SDGC --- C

Shaft diameter da	Housing Dimensions																Approx Weight Housing type		Designation <sup>1)</sup> of Housing (for grey cast iron)
	A	A <sub>1</sub>	A <sub>2</sub>	A <sub>3</sub>	A <sub>4</sub>	A <sub>5</sub>	A <sub>6</sub>	C	H	H <sub>1</sub>	H <sub>2</sub>	J	J <sub>1</sub>	L	N	T	A	B	
mm	mm																kg		
125	222	165	258	110	219	237	107	6	385	210	85	500	90	590	35	30	92,4	101	SDGC 2328
135	237	180	272	117	234	251	114	6	410	225	90	510	100	600	35	30	111	121	SDGC 2330
140	253	195	288	125	250	266	122	6	440	240	95	580	105	690	42	36	141	151	SDGC 2332
150	197	140	232	97	194	212	94	6	387	210	85	490	70	580	28	24	73	81	SDGC 2234
	222	165	256	110	219	237	107	6	385	210	85	500	90	590	35	30	86	91	SDGC 3234
	270	210	315	135	265	285	130	8	475	260	105	610	120	720	42	36	182	196	SDGC 2334
160	222	165	258	110	219	237	107	6	385	210	85	500	90	590	35	30	91	95	SDGC 3136
	207	150	242	102	204	221	99	6	424	230	90	520	80	600	28	24	99	111	SDGC 2236
	237	180	272	117	234	251	114	6	410	225	90	510	100	600	35	30	111	116	SDGC 3236
	270	210	315	135	265	285	130	8	475	260	105	610	120	720	42	36	166	181	SDGC 2336
170	237	180	272	117	234	251	114	6	410	225	90	510	100	600	35	30	111	116	SDGC 3138
	207	150	242	102	204	221	99	6	424	230	90	520	80	600	28	24	96	102	SDGC 2238
	253	195	288	125	250	266	122	6	440	240	95	580	105	690	42	36	142	146	SDGC 3238
	298	225	336	146	293	311	141	8	515	280	115	655	130	770	42	36	226	242	SDGC 2338
180	197	140	232	97	194	212	94	6	387	210	85	490	70	580	28	24	71	76	SDGC 3040
	253	195	288	125	250	266	122	6	440	240	95	580	105	690	42	36	141	146	SDGC 3140
	220	160	265	110	215	235	105	8	445	240	95	560	80	670	35	30	111	126	SDGC 2240
	270	210	315	135	265	285	130	8	475	260	105	610	120	720	42	36	182	192	SDGC 3240
	328	250	366	158	323	343	153	8	565	310	125	730	140	860	48	42	272	281	SDGC 2340
200	207	150	242	102	204	221	99	6	424	230	90	520	80	600	28	24	83	93	SDGC 3044
	270	210	315	135	265	285	130	8	475	260	105	610	120	720	42	36	171	182	SDGC 3144
	233	160	270	113	228	246	108	8	500	270	110	620	80	710	35	30	136	156	SDGC 2244
	298	225	336	146	293	311	141	8	515	280	115	655	130	770	42	35	222	232	SDGC 3244
	330	250	370	160	323	343	153	10	585	320	130	750	145	880	48	42	317	332	SDGC 2344
220	220	160	265	110	215	235	105	8	445	240	95	560	80	670	35	30	101	116	SDGC 3048
	298	225	336	146	293	311	141	8	515	280	115	655	130	770	42	36	217	230	SDGC 3148
	270	190	310	130	263	283	123	10	570	310	120	710	100	825	42	36	231	261	SDGC 2248
	328	250	366	158	323	343	153	8	565	310	125	730	140	860	48	42	297	312	SDGC 3248
	360	280	405	175	353	376	168	10	640	350	140	800	165	940	48	42	402	427	SDGC 2348

<sup>1)</sup> The designation denotes a housing for plain cylindrical shafts. A housing for stepped cylindrical shafts is designated by suffix C, e.g. SDGC 2328 C



Shaft diameter $d_a$	Appropriate bearing	adapter sleeve	Shaft seating, abutment and fillet dimensions					r	Grease quantity Initial fill (recommended)
			$d_b$ <sup>1)</sup>	$d_c$ min	$b_a$	$b_b$	$b_c$		
mm	–		mm					kg	
125	22328 CCK/W33	H 2328	142	150	188	40	78	2,5	1,80
135	22330 CCK/W33	H 2330	152	160	200	44	83	2,5	2,30
140	22332 CCK/W33	H 2332	162	175	213	48	88	4,0	2,90
150	22234 CCK/W33	H 3134	172	185	172	38	75	4,0	1,40
	23234 CCK/W33	H 2334	172	180	198	38	88	2,5	1,50
	22334 CCK/W33	H 2334	172	185	228	52	93	4,0	3,20
160	23136 CCK/W33	H 3136	182	190	192	44	82	2,5	1,30
	23236 CCK/W33	H 3136	182	195	179	40	77	4,0	1,70
	23236 CCK/W33	H 2336	182	190	207	42	90	2,5	1,90
	22336 CCK/W33	H 2336	182	195	232	50	97	4,0	3,50
170	23138 CCK/W33	H 3138	192	200	204	46	87	2,5	1,70
	22238 CCK/W33	H 3138	192	205	183	40	81	4,0	1,70
	23238 CCK/W33	H 2338	192	205	220	45	95	4,0	2,40
	22338 CCK/W33	H 2338	192	205	247	56	101	4,0	4,50
180	23040 CCK/W33	H 3040	202	215	174	40	77	4,0	1,10
	23140 CCK/W33	H 3140	202	215	217	48	92	4,0	2,20
	22240 CCK/W33	H 3140	202	215	194	42	84	4,0	2,00
	23240 CCK/W33	H 2340	202	215	235	50	100	4,0	2,70
	22340 CCK/W33	H 2340	202	215	263	62	105	4,0	5,60
200	23044 CCK/W33	OH 3044 H	222	235	182	40	80	4,0	1,40
	23144 CCK/W33	OH 3144 H	222	235	235	52	100	4,0	2,60
	22244 CCK/W33	OH 3144 H	222	235	207	42	94	4,0	2,40
	23244 CCK/W33	OH 2344 H	222	235	258	52	112	4,0	4,00
	22344 CCK/W33	OH 2344 H	222	235	272	62	112	4,0	6,00
220	23048 CCK/W33	OH 3048 H	242	255	195	45	85	4,0	1,40
	23148 CCK/W33	OH 3148 H	242	255	252	58	106	4,0	3,40
	22248 CCK/W33	OH 3148 H	242	255	232	50	102	4,0	3,40
	23248 CCK/W33	OH 2348 H	242	255	280	54	122	4,0	5,00
	22348 CCK/W33	OH 2348 H	242	255	295	68	120	4,0	7,30

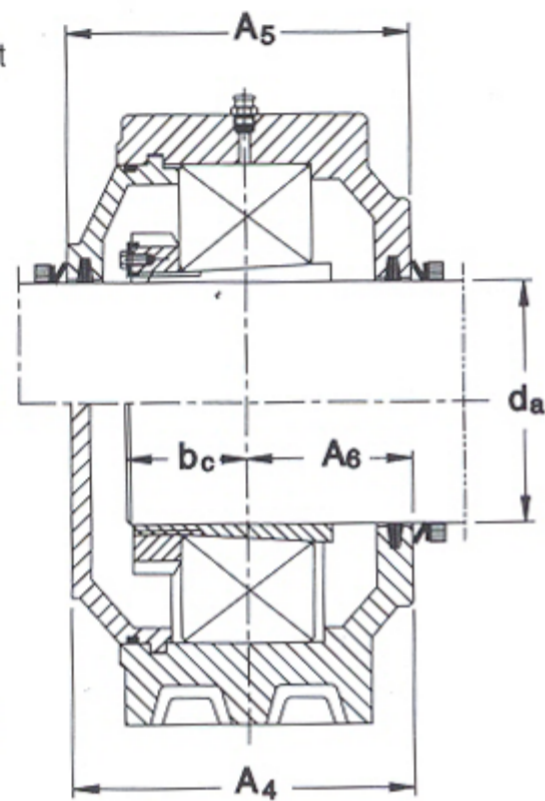
1) The tolerance for  $d_b$  should be h6



TABLE - 22

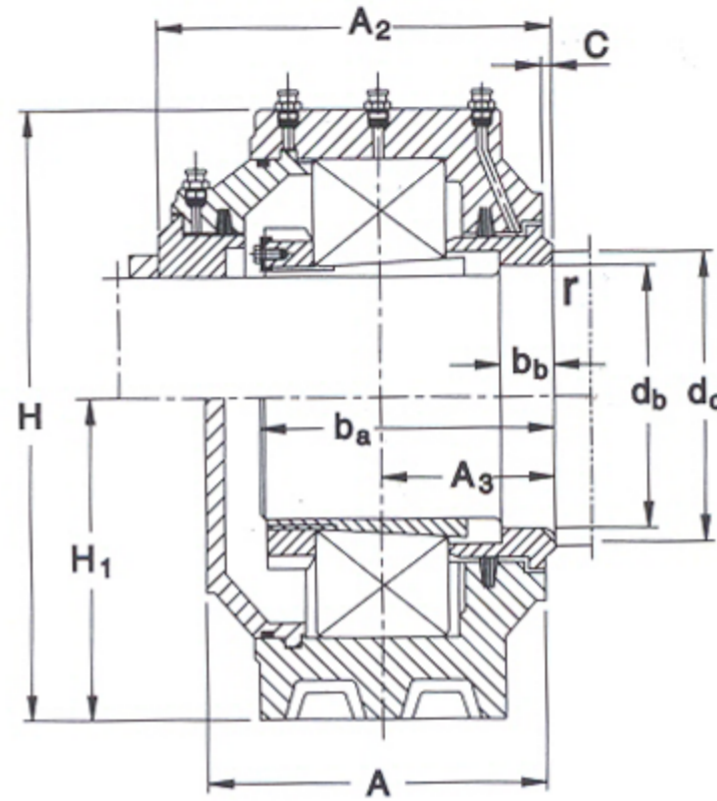
**SDG plummer block housings  
for spherical roller bearings with ADAPTER SLEEVES**  
Shaft dia 125 to 530 mm

Top half shows fixed bearing for through shaft



Housing with felt seal  
Plain cylindrical shaft

Bottom half shows free bearing for shaft end with end cover



Housing with labyrinth seal felt  
Stepped cylindrical shaft

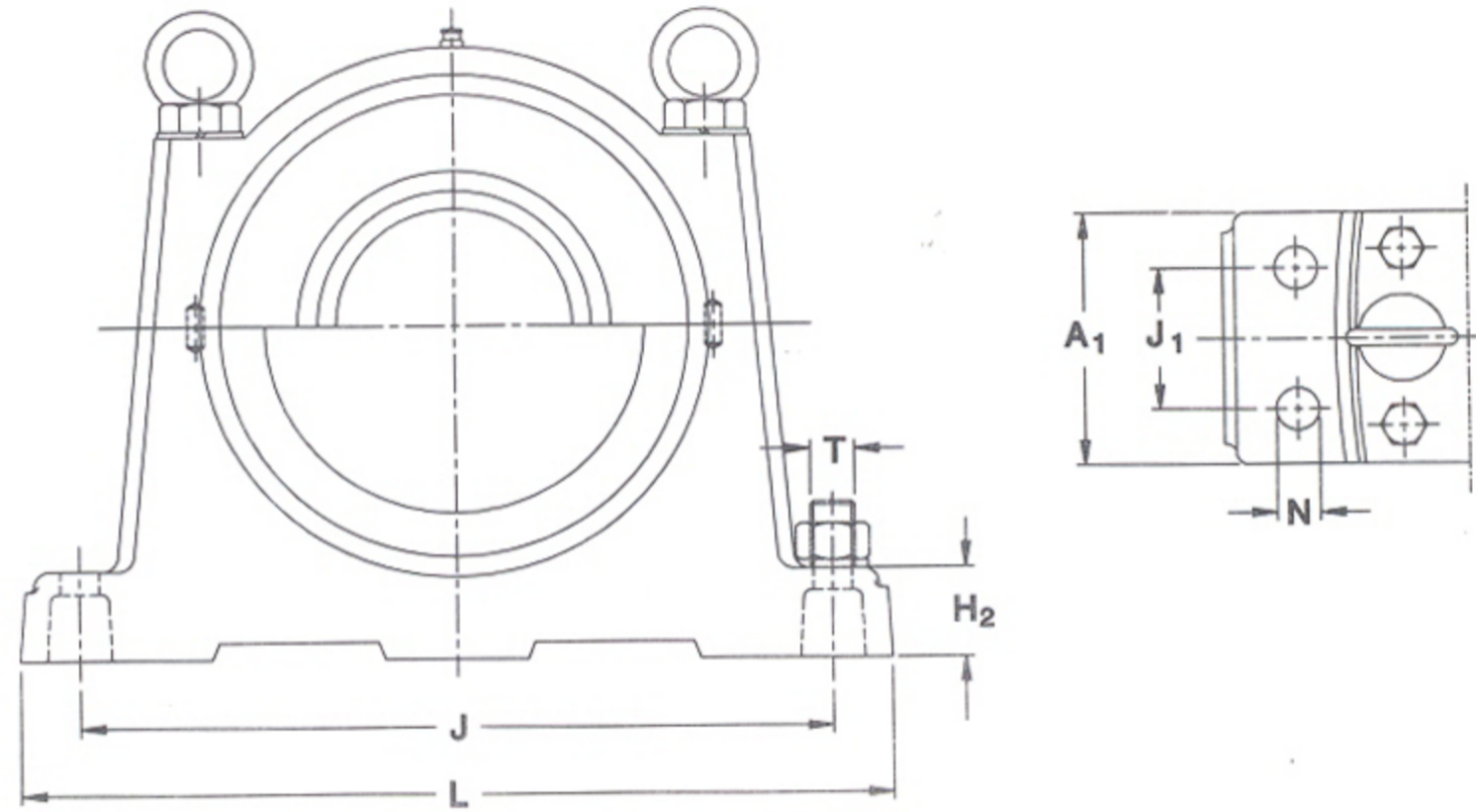
Material	C.I. FG 260 - IS 210, 1993
Seal	Labyrinth or Felt
Lubrication	Grease
Type	Horizontal Split type with end covers
Application	Suitable for heavy duty services continuous operation.
Options Available	a) End cover for closed end. b) Material : Cast Iron : SDGS S.G. Iron : SDGD c) BL, BF, AL or AF d) For bearing with withdrawal sleeve : SDGC --- D For bearing on stepped cyl shaft : SDGC --- G For bearing with adpter sl for stepped shaft : SDGC --- C

Shaft diameter da	Housing Dimensions																Approx Weight Housing type		Designation <sup>1)</sup> of Housing (for grey cast iron)
	A	A <sub>1</sub>	A <sub>2</sub>	A <sub>3</sub>	A <sub>4</sub>	A <sub>5</sub>	A <sub>6</sub>	C	H	H <sub>1</sub>	H <sub>2</sub>	J	J <sub>1</sub>	L	N	T	A	B	
mm	mm																kg		
400	325	240	368	150	318	338	143	11	760	410	165	960	120	1130	65	48	452	477	SDGC 3084
	470	390	534	229	469	487	219	14	895	490	200	1110	225	1300	66	56	1110	1100	SDGC 3184
	508	420	575	243	496	511	231	16	1005	530	160	1270	240	1500	82	72 X 6	1310	1310	SDGC 3284
410	347	260	400	162	339	359	154	12	800	430	170	1000	130	1160	56	48	505	546	SDGC 3088
	484	390	544	229	474	489	219	14	945	500	150	1160	225	1370	74	64	1060	1060	SDGC 3188
	518	430	585	248	506	522	236	16	1045	550	165	1300	245	1530	82	72 X 6	1410	1410	SDGC 3288
430	369	280	424	174	359	377	164	14	835	450	180	1070	130	1250	66	56	656	687	SDGC 3092
	508	420	575	243	496	511	231	16	1005	530	160	1270	240	1500	82	72 X 6	1310	1310	SDGC 3192
	558	460	623	263	546	561	251	16	1095	580	175	1350	260	1580	82	72 X 6	1660	1660	SDGC 3292
450	379	290	434	179	369	387	169	14	855	460	185	1080	140	1260	66	56	705	736	SDGC 3096
	518	430	585	248	506	522	236	16	1045	550	165	1300	245	1530	82	72 X 6	1410	1410	SDGC 3196
	560	470	625	270	546	561	256	18	1130	600	180	1390	270	1620	82	72 X 6	1760	1810	SDGC 3296
470	384	290	444	179	374	389	169	14	865	460	190	1100	140	1280	66	56	725	757	SDGC 30/500
	558	460	623	263	546	561	251	16	1095	580	175	1350	260	1580	82	72 X 6	1660	1710	SDGC 31/500
	605	500	660	285	591	596	271	18	1190	640	190	1420	300	1680	82	72 X 6	2060	2112	SDGC 32/500
500	428	430	495	203	416	431	191	16	1045	550	165	1300	245	1530	82	72 X 6	1260	1310	SDGC 30/530
	560	470	625	270	546	561	256	18	1130	600	180	1390	270	1620	82	72 X 6	1812	1820	SDGC 31/530
530	438	460	503	203	426	441	191	16	1095	580	175	1350	260	1580	82	72 x 6	1460	1510	SDGC 30/560
	605	500	660	285	591	596	271	18	1190	640	190	1420	300	1680	82	72 x 6	2110	2160	SDGC 31/560

Above housings are also available for spherical roller bearings with

- a) Withdraw sleeve - Designation as SDGC --- D
- b) Cylindrical bore - Designation as SDGC --- G

<sup>1)</sup> The designation denotes a housing for plain cylindrical shafts. A housing for stepped cylindrical shafts is designated by suffix C, e.g. SDGC 3084 C



Shaft diameter $d_a$	Appropriate bearing	adapter sleeve	Shaft seating, abutment and fillet dimensions						Grease quantity Initial fill (recommended)
			$d_b^{1)}$	$d_c$ min	$b_a$	$b_b$	$b_c$	r	
mm	-		mm						kg
400	23084 CAK/W33	OH 3084 H	422	440	283	55	133	6,0	6,20
	23184 CK/W33	OH 3184 H	422	440	417	82	188	6,0	17,5
	23284 CAK/W33	OH 3284 H	422	440	455	76	212	6,0	25,0
410	23088 CAK/W33	OH 3088 H	442	460	307	55	145	6,0	7,30
	23188 CAK/W33	OH 3188 H	442	460	418	82	189	6,0	19,0
	23288 CAK/W33	OH 3288 H	442	460	464	76	216	6,0	27,5
430	23092 CAK/W33	OH 3092 H	462	480	322	60	148	6,0	8,70
	23192 CAK/W33	OH 3192 H	462	480	444	86	201	6,0	21,5
	23292 CAK/W33	OH 3292 H	462	480	492	80	229	6,0	31,5
450	23096 CAK/W33	OH 3096 H	482	500	327	66	148	6,0	9,30
	23196 CAK/W33	OH 3196 H	482	500	453	87	205	6,0	24,5
	23296 CAK/W33	OH 3296 H	482	500	506	80	236	6,0	36,5
470	230/500 CAK/W33	OH 30/500 H	502	520	336	64	157	6,0	9,70
	231/500 CAK/W33	OH 31/500 H	502	520	481	92	218	6,0	27,5
	232/500 CAK/W33	OH 32/500 H	502	520	539	82	254	6,0	43,0
500	230/530 CAK/W33	OH 30/530 H	532	550	370	75	167	6,0	15,5
	231/530 CAK/W33	OH 31/530 H	532	550	492	94	222	6,0	32,0
530	230/560 CAK/W33	OH 30/560 H	562	590	382	75	179	10	15,5
	231/560 CAK/W33	OH 31/560 H	562	590	517	100	232	10	39,0

<sup>1)</sup> The tolerance for  $d_b < 412$  mm should be h6 and for  $d_b > 412$  mm h7

- Note: 1. Housing is supplied with 1/8" BSP grease nipple on top.  
2. Housing is supplied as located and non-located type as required, by providing appropriate end cover.  
3. Refer Table III and V for selecting alternative material in case of higher load condition.