



TABLE - 1

ADAPTER SLEEVES

Metric size shaft

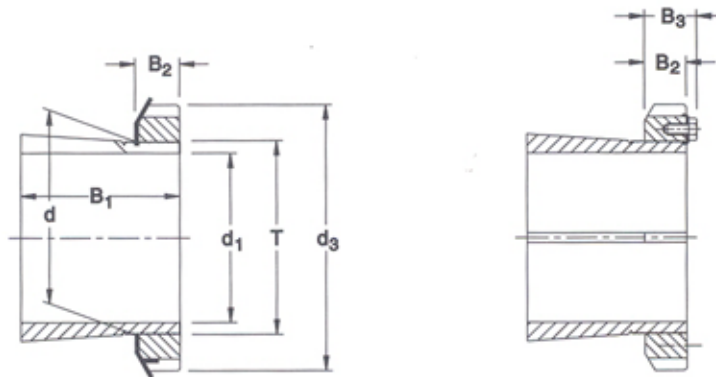
Shaft dia : 17 to 500 mm

External Taper : 1 : 12 on OD

Material : C20 / C30

Mfg. Standard : IS 8656-1977

ISO 113/I-1979



(Adapter sleeve with locking clip)

Dimensions						Approx Weight	Designations Adapter sleeve with lock nut and lock washer	Lock nut	Lock washer
d ₁	d	d ₃	B ₁	B ₂	T				
mm						kg	-		
17	20	32	24	7	M 20 X 1	0,038	H 204	KM 4	MB 4
		32	28	7	M 20 X 1	0,042	H 304	KM 4	MB 4
20	25	38	26	8	M 25 X 1,5	0,066	H 205	KM 5	MB 5
		38	29	8	M 25 X 1,5	0,074	H 305	KM 5	MB 5
		38	35	8	M 25 X 1,5	0,086	H 2305	KM 5	MB 5
25	30	45	27	8	M 30 X 1,5	0,087	H 206	KM 6	MB 6
		45	31	8	M 30 X 1,5	0,096	H 306	KM 6	MB 6
		45	38	8	M 30 X 1,5	0,11	H 2306	KM 6	MB 6
30	35	52	29	9	M 35 X 1,5	0,12	H 207	KM 7	MB 7
		52	35	9	M 35 X 1,5	0,15	H 307	KM 7	MB 7
		52	43	9	M 35 X 1,5	0,16	H 2307	KM 7	MB 7
35	40	58	31	10	M 40 X 1,5	0,18	H 208	KM 8	MB 8
		58	38	10	M 40 X 1,5	0,17	H 308	KM 8	MB 8
		58	46	10	M 40 X 1,5	0,24	H 2308	KM 8	MB 8
40	45	65	33	11	M 45 X 1,5	0,22	H 209	KM 9	MB 9
		65	39	11	M 45 X 1,5	0,23	H 309	KM 9	MB 9
		65	50	11	M 45 X 1,5	0,28	H 2309	KM 9	MB 9
45	50	70	35	12	M 50 X 1,5	0,24	H 210	KM 10	MB 10
		70	42	12	M 50 X 1,5	0,27	H 310	KM 10	MB 10
		70	55	12	M 50 X 1,5	0,34	H 2310	KM 10	MB 10
50	55	75	37	12.5	M 55 X 2	0,28	H 211	KM 11	MB 11
		75	45	12.5	W 55 X 19TPI	0,32	H 311	HM 11	MB 11
		75	59	12.5	M 55 X 2	0,40	H 2311	KM 11	MB 11
55	60	80	38	13	M 60 X 2	0,32	H 212	KM 12	MB 12
		80	47	13	M 60 X 2	0,38	H 312	KM 12	MB 12
		80	62	13	M 60 X 2	0,45	H 2312	KM 12	MB 12
60	65	85	40	14	M 65 X 2	0,38	H 213	KM 13	MB 13
		85	50	14	M 65 X 2	0,42	H 313	KM 13	MB 13
		85	65	14	M 65 X 2	0,54	H 2313	KM 13	MB 13

TABLE - 1

ADAPTER SLEEVES

Metric size shaft

Shaft dia : 17 to 500 mm

External Taper : 1 : 12 on OD

Material : C20 / C30
Mfg. Standard: I.S. 8656-1977
ISO 113/I-1979

Dimensions						Approx Weight	Designations Adapter sleeve with lock nut and lock washer	Lock nut	Lock washer
d ₁	d	d ₃	B ₁	B ₂	T				
mm						kg	-		
60	70	92	52	14	M 70 X 2	0,68	H 314	KM 14	MB 14
		92	68	14	M 70 X 2	0,88	H 2314	KM 14	MB 14
65	75	98	43	15	M 75 X 2	0,66	H 215	KM 15	MB 15
		98	55	15	M 75 X 2	0,78	H 315	KM 15	MB 15
		98	73	15	M 75 X 2	1,12	H 2315	KM 15	MB 15
70	80	105	46	17	M 80 X 2	0,84	H 216	KM 16	MB 16
		105	59	17	M 80 X 2	0,95	H 316	KM 16	MB 16
		105	78	17	M 80 X 2	1,20	H 2316	KM 16	MB 16
75	85	110	50	18	M 85 X 2	0,95	H 217	KM 17	MB 17
		110	63	18	M 85 X 2	1,12	H 317	KM 17	MB 17
		110	82	18	M 85 X 2	1,35	H 2317	KM 17	MB 17
80	90	120	52	18	M 90 X 2	1,12	H 218	KM 18	MB 18
		120	65	18	M 90 X 2	1,30	H 318	KM 18	MB 18
		120	86	18	M 90 X 2	1,65	H 2318	KM 18	MB 18
85	95	125	55	19	M 95 X 2	1,25	H 219	KM 19	MB 19
		125	68	19	M 95 X 2	1,45	H 319	KM 19	MB 19
		125	90	19	M 95 X 2	1,80	H 2319	KM 19	MB 19
90	100	130	58	20	M 100 X 2	1,40	H 220	KM 20	MB 20
		130	71	20	M 100 X 2	1,70	H 320	KM 20	MB 20
		130	97	20	M 100 X 2	2,00	H 2320	KM 20	MB 20
95	105	140	60	20	M 105 X 2	1,60	H 221	KM 21	MB 21
		140	74	20	M 105 X 2	1,85	H 321	KM 21	MB 21
100	110	145	63	21	M 110 X 2	1,80	H 222	KM 22	MB 22
		145	77	21	M 110 X 2	2,10	H 322	KM 22	MB 22
		145	81	21	M 110 X 2	2,20	H 3122	KM 22	MB 22
		145	105	21	M 110 X 2	2,75	H 2322	KM 22	MB 22
110	120	145	72	22	M 120 X 2	1,80	H 3024	KML 24	MBL 24
		155	88	22	M 120 X 2	2,50	H 3124	KM 24	MB 24
		155	112	22	M 120 X 2	3,25	H 2324	KM 24	MB 24
115	130	155	80	23	M 130 X 2	2,80	H 3026	KML 26	MBL 26
		165	92	23	M 130 X 2	3,50	H 3126	KM 26	MB 26
		165	121	23	M 130 X 2	4,50	H 2326	KM 26	MB 26
125	140	165	82	24	M 140 X 2	3,10	H 3028	KML 28	MBL 28
		180	97	24	M 140 X 2	4,15	H 3128	KM 28	MB 28
		180	131	24	M 140 X 2	5,40	H 2328	KM 28	MB 28
135	150	180	87	26	M 150 X 2	3,75	H 3030	KML 30	MBL 30
		195	111	26	M 150 X 2	5,25	H 3130	KM 30	MB 30
		195	139	26	M 150 X 2	6,40	H 2330	KM 30	MB 30
140	160	190	93	27,5	M 160 X 3	5,15	H 3032	KML 32	MBL 32
		210	119	28	M 160 X 3	7,25	H 3132	KM 32	MB 32
		210	147	28	M 160 X 3	8,80	H 2332	KM 32	MB 32
150	170	200	101	28,5	M 170 X 3	5,80	H 3034	KML 34	MBL 34
		220	122	29	M 170 X 3	8,15	H 3134	KM 34	MB 34
		220	154	29	M 170 X 3	9,90	H 2334	KM 34	MB 34
160	180	210	109	29,5	M 180 X 3	6,70	H 3036	KML 36	MBL 36
		230	131	30	M 180 X 3	9,20	H 3136	KM 36	MB 36
		230	161	30	M 180 X 3	11,0	H 2336	KM 36	MB 36
170	190	220	112	30,5	M 190 X 3	7,25	H 3038	KML 38	MBL 38
		240	141	31	M 190 X 3	10,50	H 3138	KM 38	MB 38
		240	169	31	M 190 X 3	12,0	H 2338	KM 38	MB 38
180	200	240	120	31,5	M 200 X 3	8,90	H 3040	KML 40	MBL 40
		250	150	32	M 200 X 3	12,00	H 3140	KM 40	MB 40
		250	176	32	M 200 X 3	13,50	H 2340	KM 40	MB 40

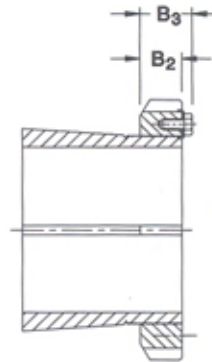
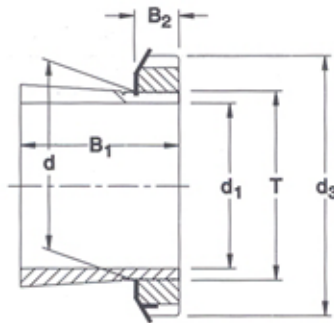


TABLE - 1

ADAPTER SLEEVES

Metric size shaft
 Shaft dia : 17 to 500 mm
 External Taper : 1 : 12 on OD

Material : C20 / C30
 Mfg.Standard: IS 8656-1977
 ISO 113/I-1979



(Adapter sleeve with locking clip)

Dimensions							Approx Weight	Designations Adapter sleeve with lock nut and locking device	Lock nut	Lock washer/ Locking device
d ₁	d	d ₃	B ₁	B ₂	B ₃	T				
mm							kg			
200	220	260	126	30	41	Tr 220 X 4	9,95	H 3044	HM 3044	MS 3044
		280	161	35	-	Tr 220 X 4	15,0	H 3144	HM 44	MB 44
		280	186	35	-	Tr 220 X 4	17,0	H 2344	HM 44	MB 44
220	240	290	133	34	46	Tr 240 X 4	12,0	H 3048	HM 3048	MS 3048-52
		300	172	37	-	Tr 240 X 4	16,0	H 3148	HM 48	MB 48
		300	199	37	-	Tr 240 X 4	19,0	H 2348	HM 48	MB 48
240	260	310	145	34	46	Tr 260 X 4	13,8	H 3052	HM 3052	MS 3048-52
		330	190	39	-	Tr 260 X 4	21,0	H 3152	HM 52	MB 52
		330	211	39	-	Tr 260 X 4	23,5	H 2352	HM 52	MB 52
260	280	330	152	38	50	Tr 280 X 4	16,5	H 3056	HM 3056	MS 3056
		350	195	41	-	Tr 280 X 4	23,0	H 3156	HM 56	MB 56
		350	224	41	-	Tr 280 X 4	27,5	H 2356	HM 56	MB 56
280	300	360	168	42	54	Tr 300 X 4	20,5	H 3060	HM 3060	MS 3060
		380	208	40	53	Tr 300 X 4	29,0	H 3160	HM 3160	MS 60
		380	240	40	53	Tr 300 X 4	32,5	H 3260	HM 3160	MS 60
300	320	380	171	42	55	Tr 320 X 4	22,0	H 3064	HM 3064	MS 3068-64
		400	226	42	56	Tr 320 X 4	32,0	H 3164	HM 3164	MS 3164
		400	258	42	56	Tr 320 X 4	35,0	H 3264	HM 3164	MS 3164
320	340	400	187	45	58	Tr 340 X 5	27,2	H 3068	HM 3068	MS 3068-64
		440	254	55	72	Tr 340 X 5	50,0	H 3168	HM 3168	MS 3172-68
		440	288	55	72	Tr 340 X 5	51,5	H 3268	HM 3168	MS 3172-68

TABLE - 1

ADAPTER SLEEVES

Metric size shaft

Shaft dia : 17 to 500 mm

External Taper : 1 : 12 on OD

Material : C20 / C30

Mfg.Standard: IS 8656-1977

ISO 113/I-1979

Dimensions							Approx Weight	Designations Adapter sleeve with lock nut and locking device	Lock nut	Lock washer/ Locking device
d ₁	d	d ₃	B ₁	B ₂	B ₃	T				
mm							kg			
340	360	420	188	45	58	Tr 360 X 5	29,0	H 3072	HM 3072	MS 3072
		460	259	58	75	Tr 360 X 5	56,0	H 3172	HM 3172	MS 3172-68
		460	299	58	75	Tr 360 X 5	60,6	H 3272	HM 3172	MS 3172-68
360	380	450	193	48	62	Tr 380 X 5	35,5	H 3076	HM 3076	MS 3080-76
		490	264	60	77	Tr 380 X 5	61,5	H 3176	HM 3176	MS 3176
		490	310	60	77	Tr 380 X 5	69,7	H 3276	HM 3176	MS 3176
380	400	470	210	52	66	Tr 400 X 5	40,0	H 3080	HM 3080	MS 3080-76
		520	272	62	82	Tr 400 X 5	73,0	H 3180	HM 3180	MS 3184-80
400	420	490	212	52	66	Tr 420 X 5	47,0	H 3084	HM 3084	MS 3084
		540	304	70	90	Tr 420 X 5	80,5	H 3184	HM 3184	MS 3184-80
410	440	520	228	60	77	Tr 440 X 5	65,5	H 3088	HM 3088	MS 3092-88
		560	307	70	90	Tr 440 X 5	95,0	H 3188	HM 3188	MS 3192-88
430	460	540	234	60	77	Tr 460 X 5	71,5	H 3092	HM 3092	MS 3092-88
		580	326	75	95	Tr 460 X 5	119	H 3192	HM 3192	MS 3192-88
450	480	560	237	60	77	Tr 480 X 5	75,5	H 3096	HM 3095	MS 30/500-96
		620	335	75	95	Tr 480 X 5	135	H 3196	HM 3196	MS 3196
470	500	580	247	68	85	Tr 500 X 5	82,0	H 30/500	HM 30/500	MS 30/500-96
		630	356	80	100	Tr 500 X 5	145	H 31/500	HM 31/500	MS 31/500
500	530	630	265	68	90	Tr 530 X 6	105	H 30/530	HM 30/530	MS 30/600-530

Note: 1) The above dimensions are referred to sleeves prior to slitting condition. After slitting the sleeves used to have tendency to open or close a little within limits, however, it does not affect the performance. Inspection of diameters and thread size of sleeve is done prior to slitting only.

2) These sleeves can be available in blackodized/ passivated condition upon specific request.